



TABLE OF CONTENTS

All documents are also available on our website at omahanational.com



Posters

- Instructions
- C-105 - Notice of Compliance – Workers' Compensation Law
- C-105.1 - Notice to Be Posted by Employers Under WCL for Automotive or Horse-Drawn Vehicles
- Fraud Prevention Poster



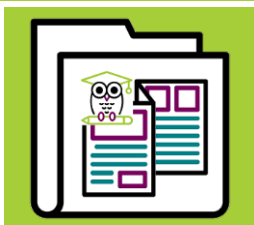
Injury Report Forms

- Instructions
- C-2F - Employer's First Report of Work-Related Injury/Illness
- C-240 - Employers Statement of Wages
- Incident, Supervisor, and Witness Reports



Injured Worker Handouts

- Instructions
- C-430S – Statement of Rights
- Claimant Information Packet: Claimant Quick Start Guide, C-3.3 Limited Release of Health Information, C-3 – Employee Claim
- Consent and Authorization for Release of Information and Request for Medical History
- Direct Deposit Authorization Form



Informational Documents

- Instructions
- Omaha National Contact Information
- Reduce Your Workers Compensation Costs
- Your Responsibilities as an Employer: Reporting Injury and Illness
- Return to Work Program Handbook



General Forms

- Instructions
- Request for Subrogation Waiver
- Form ERM-14 - Confidential Request for Ownership Information
- Company Contacts Verification



State-Specific

- Instructions
- C-105.32 - Notice of Election to Bring Partners, Members or Self-Employed Persons Under the Coverage of the New York State Workers' Compensation Law
- C-105.51 - Notice of Election to Exclude Sole Shareholder Officer or Two Executive Officers of the Corporation from Compensation Coverage
- C-105.55 - Revocation of Election to Exclude Sole Shareholder or Two Executive Officers from Compensation Coverage



Non-Compliance Notice

Please note, the use of many of the documents within this packet is required. Additional fines and enforcement actions may result from non-compliance with New York law regarding these notices.

**If you have any questions regarding your responsibilities, please contact
Omaha National at 844-761-8400.**
